

Pin Header

Straight DIP / Right Angle Type
Single / Dual Row

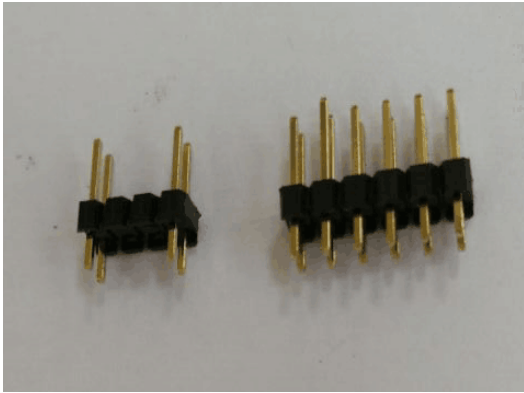
Pitch:2.54mm

Series
460 25

Odia 奥比亚

Tel: (+86)0755-28248661/2/3

Fax: (+86)0755-27857873

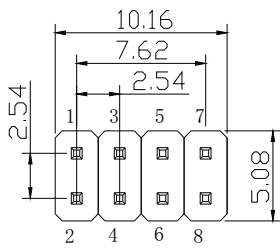


SPECIFICATIONS (技术参数):

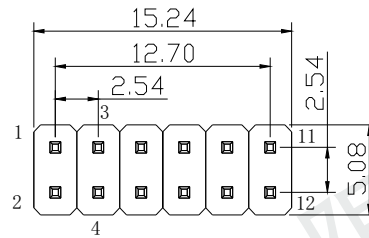
Current Rating (额定电流): 3.0 AMP
Contact Resistance (接触电阻): 30mΩ Max
Insulation Resistance (绝缘电阻): 1000MΩ Min
Withstand Voltage (耐压值): 600VAC/minute
Operation Temperature (工作温度): -40°C to +105°C

MATERIALS(材质):

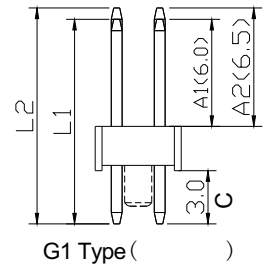
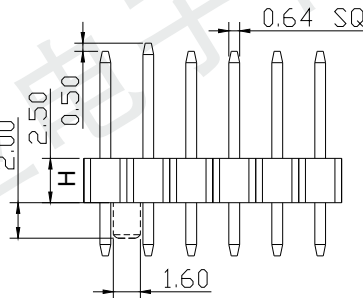
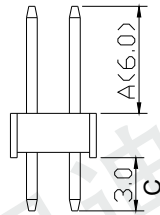
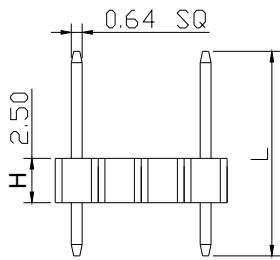
Contact Material (接触件材质): Copper Alloy
Contact Plating (接触件电镀): Gold or Tin over 50 μ "Ni
Insulator Material (绝缘体材质): Polyester(UL94V-0)
Standard: PBT



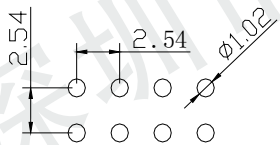
2x4Pin-4T



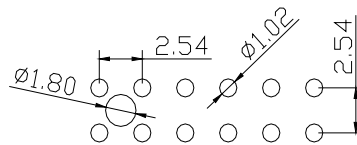
2x6Pin



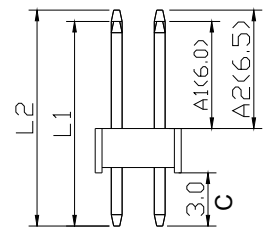
G1 Type ()



PCB LAYOUT



PCB LAYOUT



Ordering Code

① ② ③ ④ ⑤ ⑥ ⑦ ⑧ ⑨ ⑩
46025 1 2 12 S 1 4 1 A

① Series No.:
460= Pin Header
② Pitch: 25 = 2.54mm

③ Insulator Height:
1=2.50mm
3=2.00mm
4=1.70mm
5=1.50mm

④ Number of row:
2=Double row

⑤ Number of Contacts:
08(04)=(2x4Pin-4T)
12= (2x6Pin)

⑥ Tail & Mounting Style:
S=Straight DIP type
M=Straight SMT type

⑦ Contact Plated
0=Tin 1=Gold Flash
2=Gold 3u" 3=Gold 5u"
4=Gold 10u" 5=Gold 15u"
6= Gold 30u" A=Gold 1.5u"
B=Gold 2u"

⑧ Material Type:
1=PBT 2=LCP
3=PA9T 4=PA6T

⑨ Tiers of Body:
1=Single tier 2=Double tier

⑩ Pin Length
2x6Pin
A=(L1=11.5mm&L2=12.0mm)
B=(L1=11.0mm&L2=11.5mm)
C=(L1=12.0mm&L2=12.5mm)
D=(L1=12.5mm&L2=13.0mm)
E=(L1=13.0mm&L2=13.5mm)
F=(L1=13.5mm&L2=14.0mm)
G=(L1=14.0mm&L2=14.5mm)
2x4Pin-4T
11.0=11.0mm , 11.5=11.5mm
12.0=12.0mm, 12.5=12.5mm